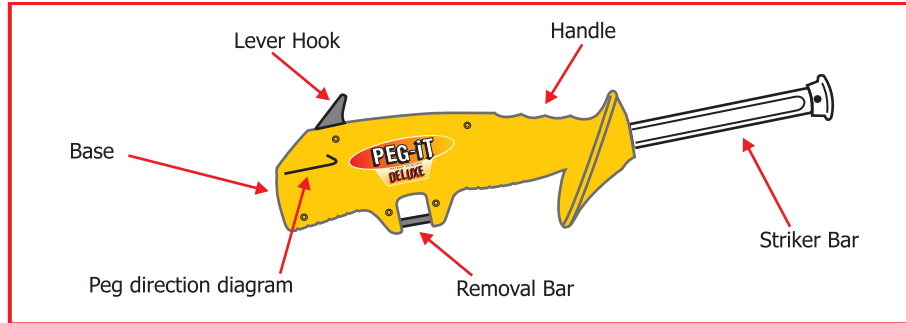
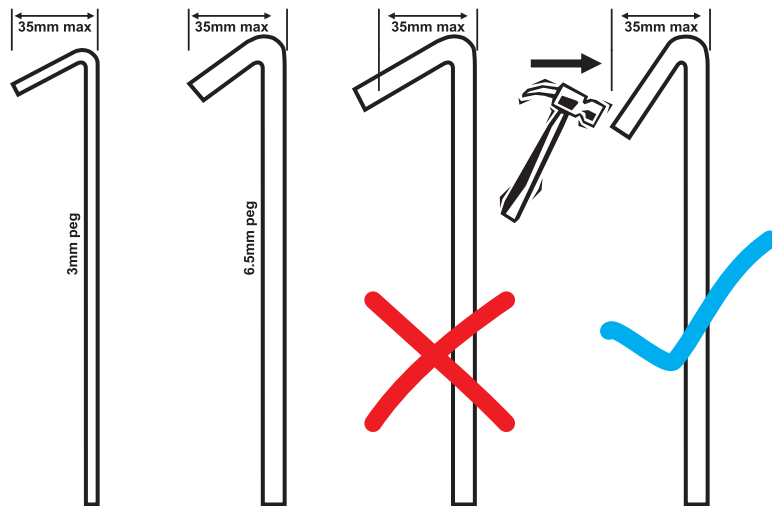


Parts List

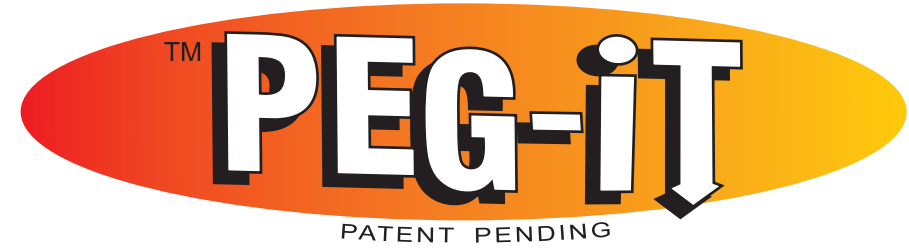


GENERAL WARNINGS

- Keep away from flames.
 - Children require supervision.
 - Do not drive pegs into underground services.
 - Recommended hammer size - 20oz.
 - Do not use bent or defective tent pegs.
 - Do not store with peg inserted.
 - Do not expose to extreme temperatures.
 - Use only as per these instructions.
- **Please note before using PEG-IT Wizard** - The distance between the outside of the peg and the hook should not exceed 35mm as illustrated below. It can be slightly less.
- **To adjust your existing tent pegs** - place on a solid surface and tap with a hammer until the peg is the required distance (35mm).



Groundbreaker Pty Ltd - Australia - www.peg-it.com.au
 Made in China Model No: 001



Tent Peg 'Wizard'

For easy installation of tent pegs

INSTRUCTIONS

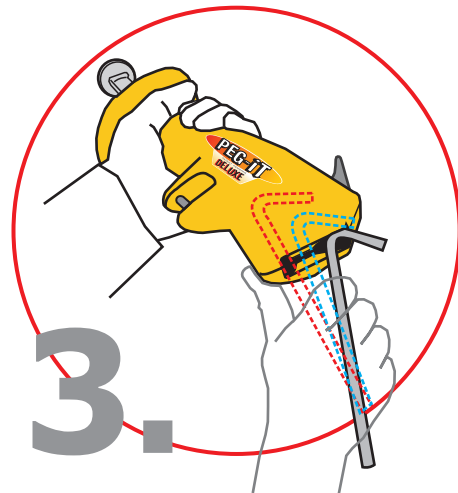
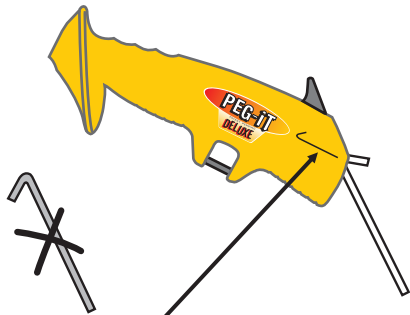


A fast and easy way to secure your tent pegs and make your camping holiday happy and enjoyable.

CAUTION: Read, understand and follow ALL instructions before using this product.

TO INSTALL TENT PEGS

Hold **PEG-IT Wizard** in preferred hand, usually the opposite hand you will hold the hammer.



Insert the peg into the base opening on a slight angle as shown above.

Pull the peg back until the peg locks into the base clip.

Push the peg fully up into the tool.

4.

Place the **PEG-IT Wizard** over the tent eyelet/rope to be secured. Using a hammer hit the **striker bar** down until it is in the closed position.

Remove the **PEG-IT Wizard** off the secured peg.



TO REMOVE TENT PEGS

1.



Install the **lever hook** under the peg and lever out slightly.

Using two hands insert the **removal bar** under the exposed hook, pull up gently and rotate the peg out.

2.

